

# Install Instructions

- It's recommended that if you have Esprit 2.0 installed, uninstall it and restart your computer prior to installing 2.1

- Extract the folder from the zip (if required) and run the "Esprit Install" application

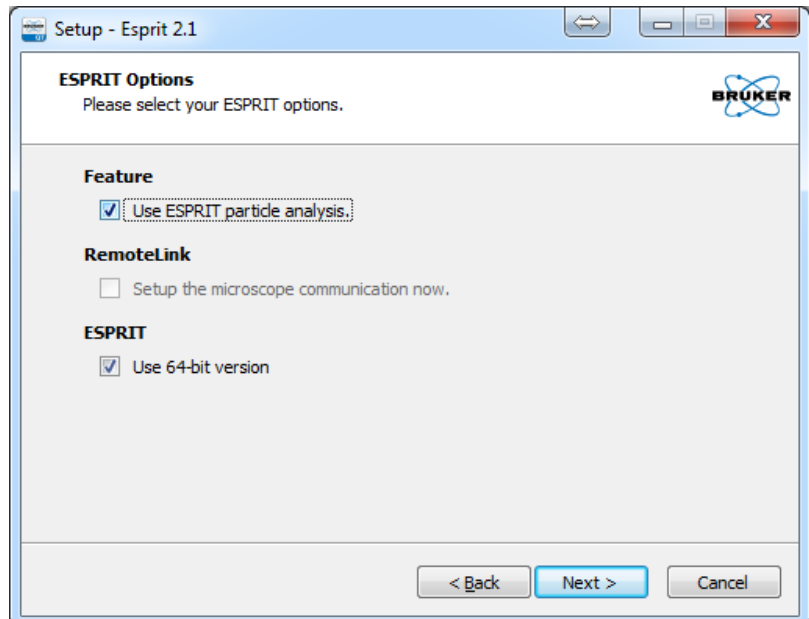
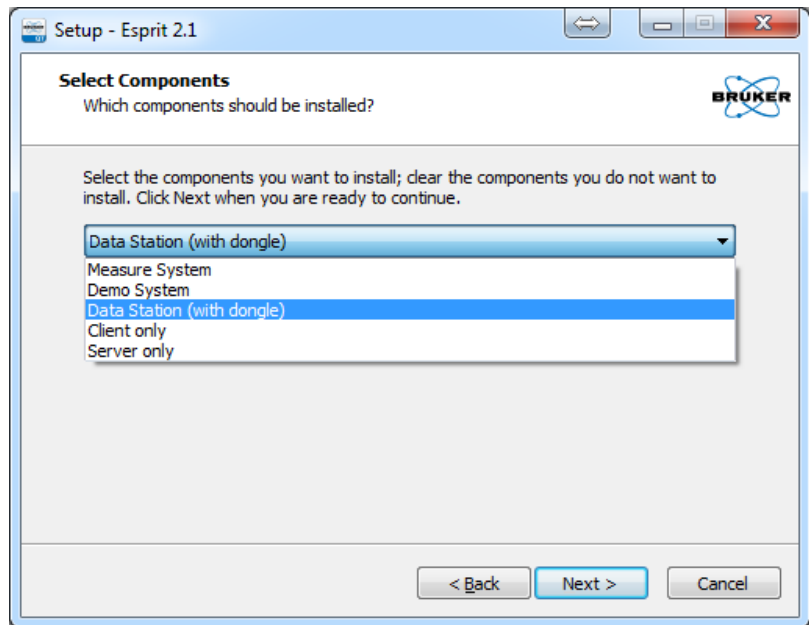
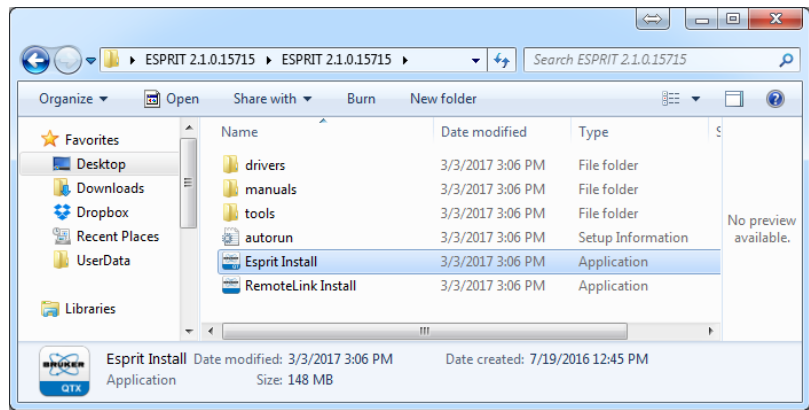
- Grant the appropriate permissions, select English, and choose where to install (recommend using the default values).

- For "Select components", choose "**Data Station (with dongle)**" from the drop down menu.

- In the next window, select "Use ESPRIT particle analysis", and 64-bit version if running a 64-bit OS.

- Hitting next proceeds with installation.

- If you get an error message "An error occurred while trying to read the source file C:\.....pdf does not exist", select **Ignore** for each (this will appear 5-6x successively, looking for different help files).



## Login Instructions

- Run Esprit 2.1.
- Before logging in, click the downward arrow on the button. From here, select “Configuration” from the drop down menu

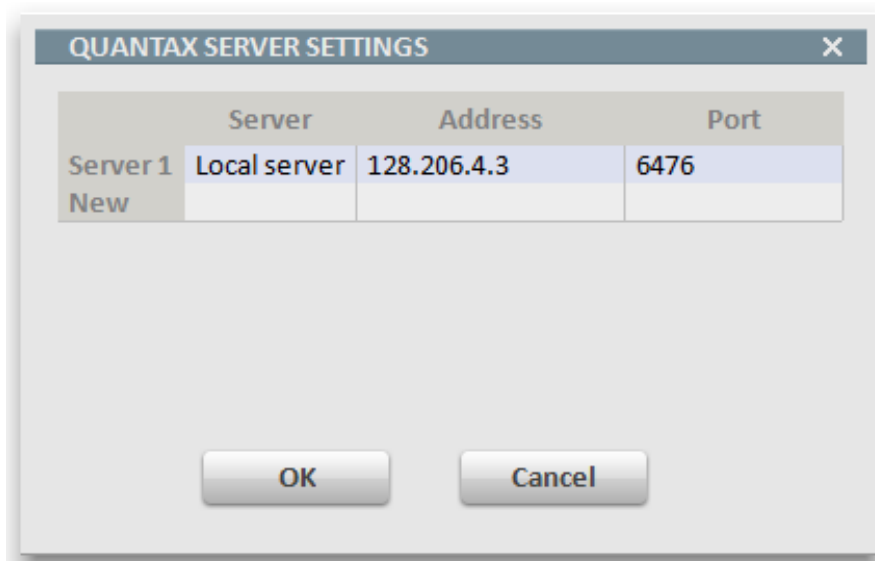


- Input the Server Settings to match the panel on the right:

**Address: 128.206.4.3**

**Port: 6476**

- Select OK.



- Enter your assigned Username and Password (contact EMC staff) and login.

- Note: you must be connected to MU’s network (either on campus or via a VPN) for access

